

**Trolley Track Locks**

**Chain Container**

### Trolley Track Locks

**QUICK ACTING TRACK LOCKS** can be supplied with any Chester Model PT trolley or Zephyr trolley hoist. Locks are available as trailer type, or built into the trolley. Lever operation, or chain actuated as shown, is optional. Steel jaws of Chester track locks are grooved to bite and hold firmly to the flange of the runway beam, and will hold with fully loaded trolley (up to 1500 lbs. in line pull). Lock is designed so no additional load pressures are applied to trolley wheels when lock is actuated.

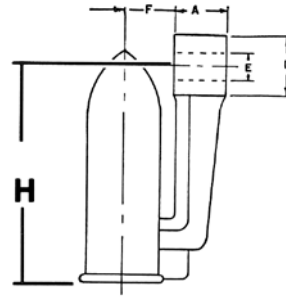
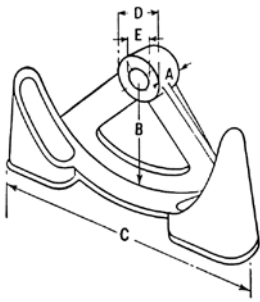
### Chain Containers

**THESE RECEPTACLES** receive the idle load chain as it reeves over the load sheave, in lifting a load. In this way, idle chain is prevented from interfering, and from marring or scratching any load with finished surfaces. Compact design helps maintain best possible headroom. Containers are available for most types of Chester Hoists.

### Overload Limiters

**THE OVERLOAD LIMITER** is an available option for all Chester Zephyr hand chain hoists, and does not increase any of the hoist's envelope dimensions. This "slip clutch" device will allow lifting of the hoist's rated load, but is designed to prohibit lifting an overload which might cause damage to the hoist.

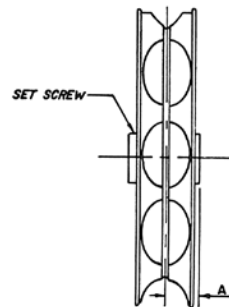
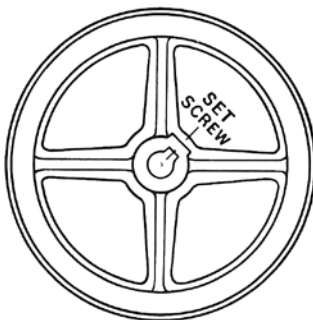
**CUSTOM** as well as standard accessories are available for all Chester hoist and trolley models. When accessories other than shown are required, call your nearest Chester distributor, your local Chester representative, or call or fax the factory sales office direct.



### Swinging Hand Wheel Guards

Part No.	DIMENSIONS IN INCHES							Net Weight, Lbs.
	A	B	C	D	Std. Bore *E	F	H	
C-37175 (7 PG)	1	2 3/4	5 11/16	1 1/2	7/8	11/16	3 3/8	1 1/2
C-9121-0075 (8 PG)	1 1/4	3 3/4	8 3/4	2	7/8	1 1/8	4 1/16	3 1/2
C-9121-0100 (12 PG)	1 3/8	4 7/8	11 1/8	1 13/16	7/8 & 1 1/4	13/16	5 3/8	5
C-9121-0150 (15 PG)	1 3/4	4 15/16	13 1/2	2 1/4	7/8 & 1 1/4	1	6 7/8	7
C-9121-1000 (20 PG)	1 3/4	7 3/8	17 1/16	2 1/4	1 1/4	1	8 1/8	11
C-9121-2500 (25 PG)	1 3/4	9	21 3/8	2 3/4	1 1/4 & 1 3/8	1	9 15/16	13

\* Special dimensions can be furnished



### Pocketed Hand wheels

Part No.	DIMENSIONS IN INCHES									Net Weight Lbs.
	Chain Size	Pitch Diameter	Outside Diameter	Regular Bore	Max. Bore	Regular Keyway	Length thru Hub	Hub Diameter	†A	
C-36072 (7 P)	5MM	4 1/16	5	7/8	1	1/4 x 1/8	1 7/32	1 3/4	39/64	3 1/4
C-9120-0075 (8 P)	1/4	5 1/4	7	7/8	1 1/4	1/4 x 1/8	1 7/8	1 11/16	1	4 1/2
C-9120-0100 (12 P)	1/4	8 1/4	9 5/16	7/8 & 1 1/4	1 1/4	1/4 x 1/8	1 29/32	1 3/4	3/4	9
C-9120-0150 (15 P)	1/4	10	11 5/16	7/8 & 1 1/4	1 3/4	1/4 x 1/8	1 7/8	2 3/8	15/16	12
C-9120-1000 (20 P)	1/4	13 3/8	14 3/8	1 1/4	1 3/4	5/16 x 5/32	1 7/8	2 3/8	15/16	22
C-9120-2500 (25 P)	1/4	16 5/8	17 3/4	1 1/4 & 1 3/8	2	5/16 x 5/32	2 3/4	2 3/4	15/16	32

†Center-line of hand chain to back

NON-STANDARD BORE AVAILABLE – CONTACT FACTORY