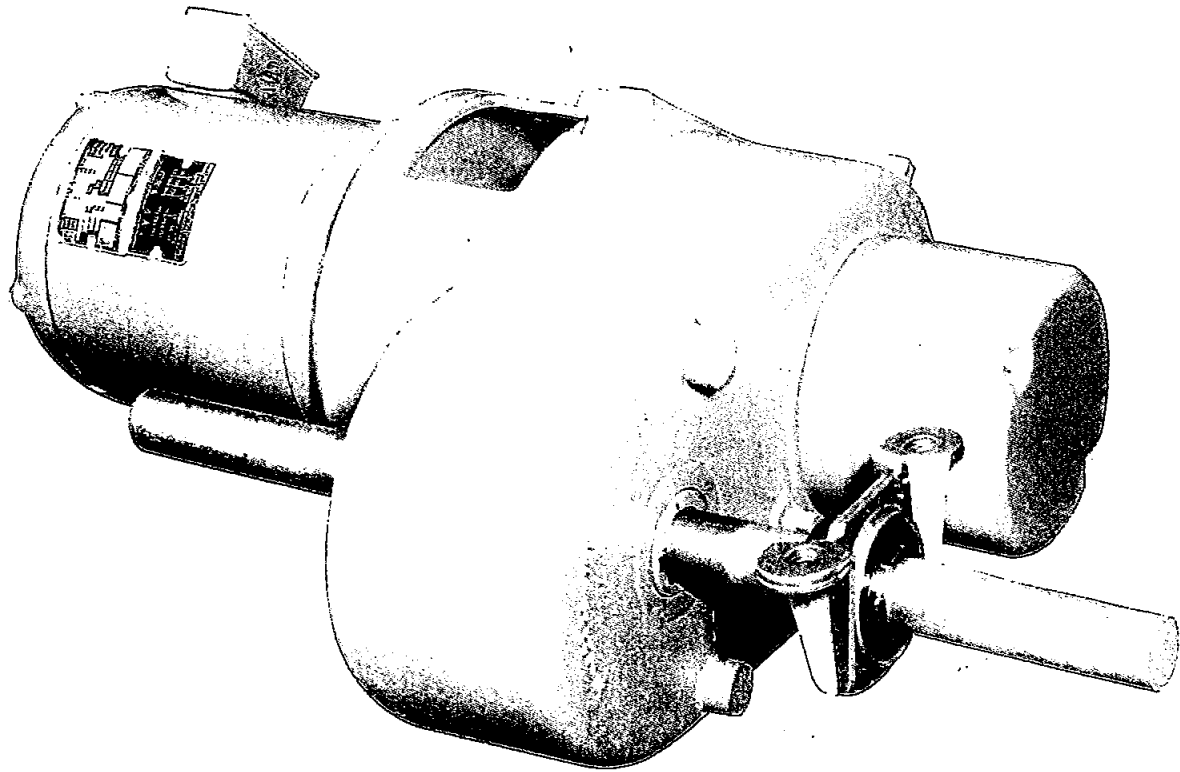


Type SM Crane Drive Service Manual and Parts Catalog

BRIDGE

TROLLEY



Serial No. _____ Motor HP _____

Reduction _____ Motor RPM _____

Current _____ Volts _____ Ph. _____ Hertz

FOREWORD

This manual has been prepared primarily to acquaint you with the general aspects of installation, operation and maintenance of the crane drive you have purchased. It is our earnest desire to express our appreciation for the privilege of serving you. We feel that the advantage of advance engineering, based on our experience in designing hoisting equipment for all types of industrial service — plus superior workmanship and the highest quality materials available — will provide for you the utmost satisfaction through the years of use. We have carefully outlined the procedures necessary to secure a safe, serviceable installation. Proper installation is important to the ultimate performance of the unit. Study the instructions carefully and observe all precautions to prolong the life of the unit. Keep this manual where it will be readily accessible in case of emergency.

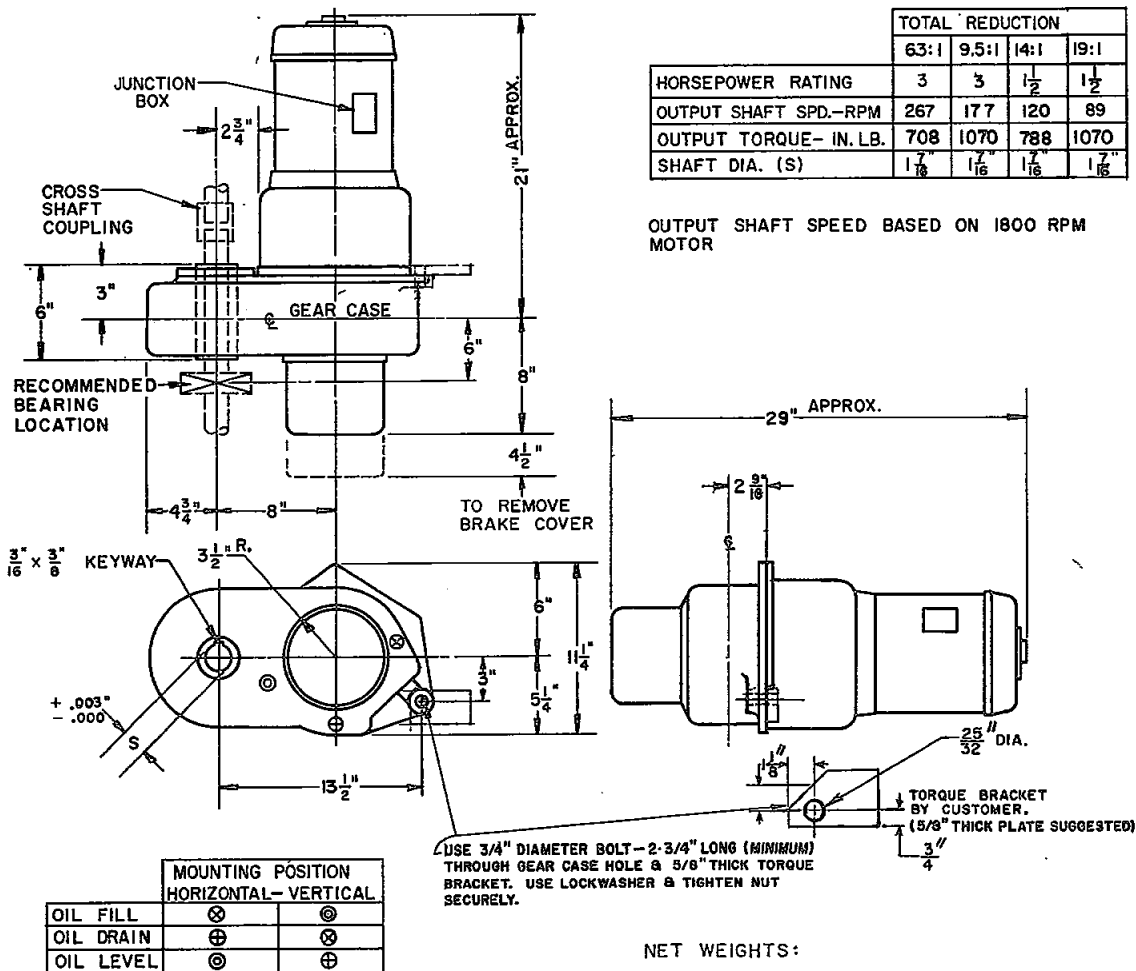
MOUNTING

The Robbins & Myers Crane Drive may be mounted in either a vertical or horizontal position.

LUBRICATION

Before putting the crane drive in use, oil should be added to the case to a level as indicated on the dimension drawings. A good commercial grade 30 weight motor oil is recommended.

Approximately 2 quarts of oil will be used if the gearcase is mounted horizontally, while 3 quarts will be required if it is mounted vertically.

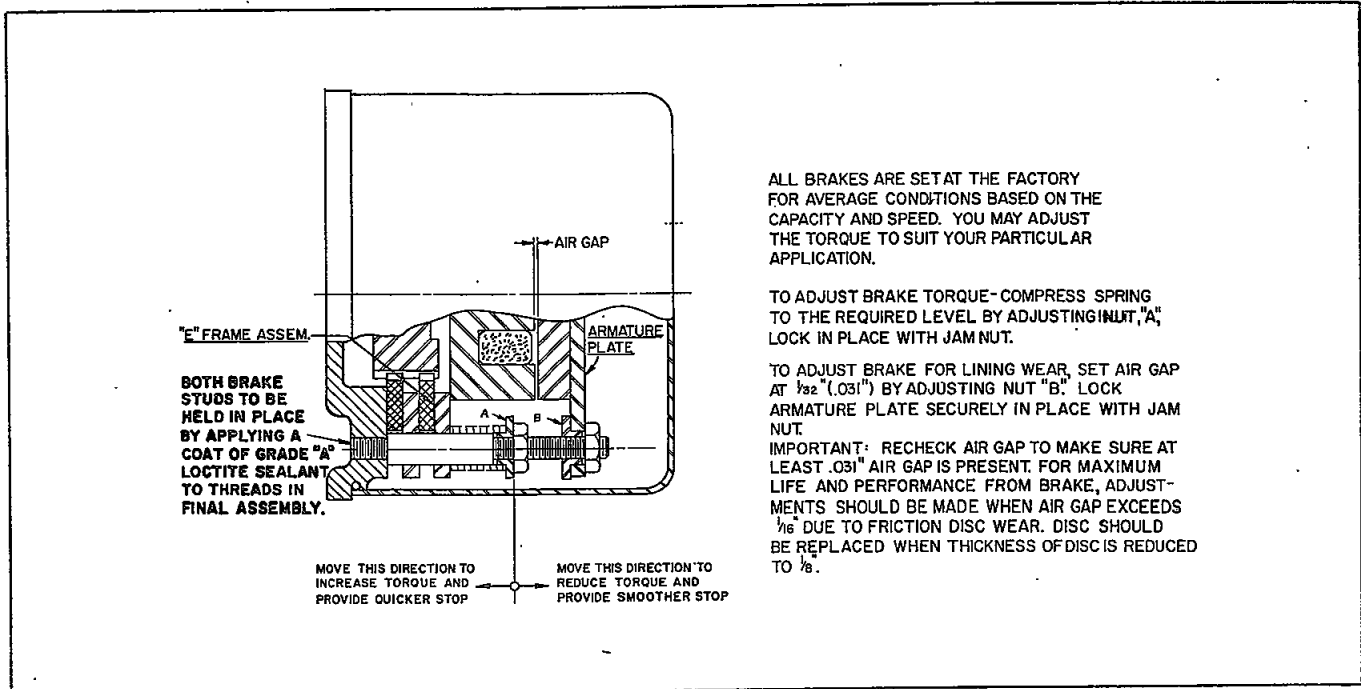


HORIZONTAL MOUNTING POSITION SHOWN. VERTICAL MOUNTING HAS MOTOR UNDER CROSS SHAFT FOR PROPER LUBRICATION.

NET WEIGHTS:

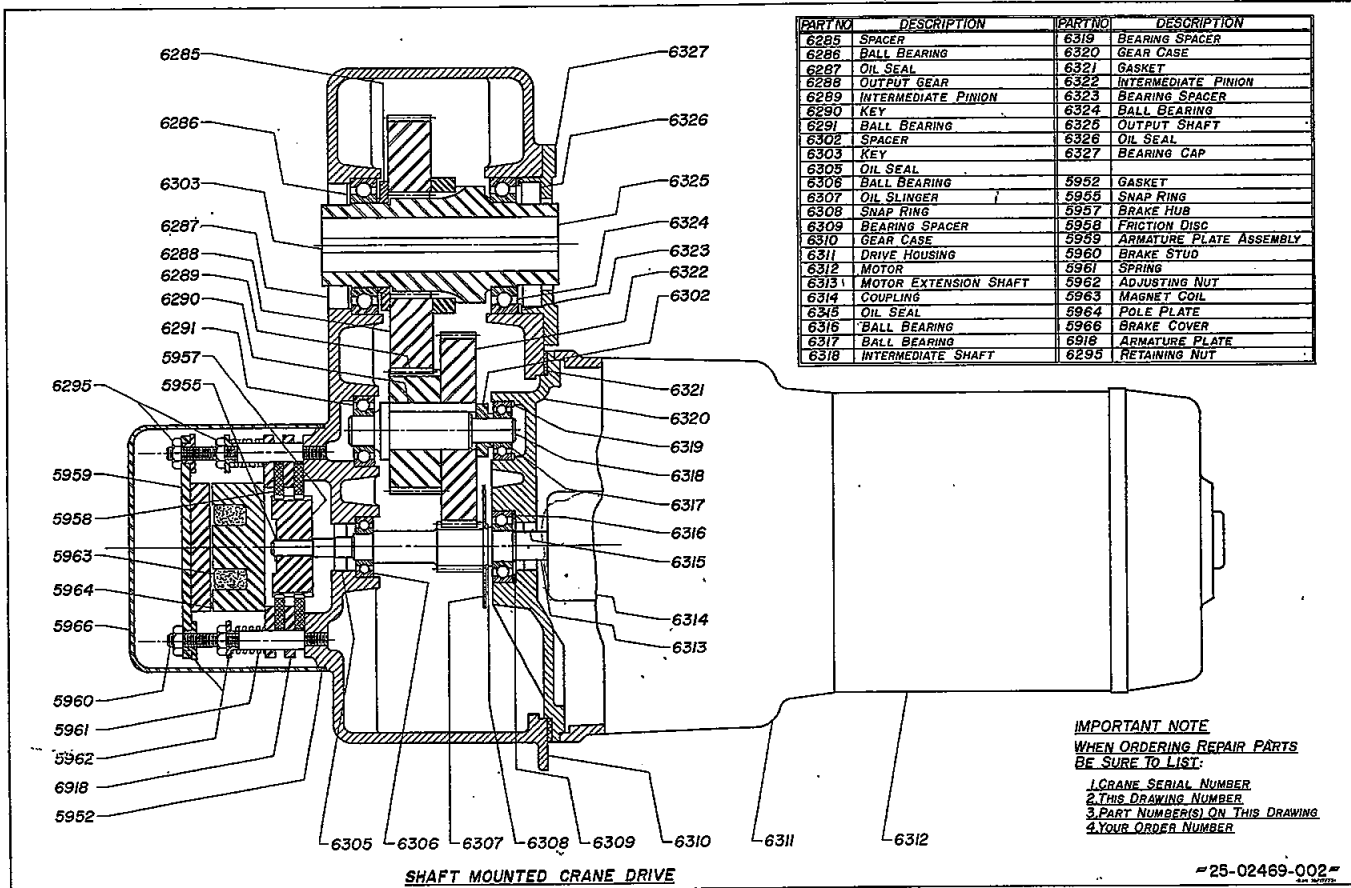
SINGLE SPEED _____ 190 LBS.
ACCELERATING FLUID DRIVE _____ 195 LBS.
SLIP RING VARIABLE SPEED _____ 210 LBS.

BRAKE



SPARE PARTS

Order spare parts by listing the crane drive Serial Number and the Part Number as listed below.



COUPLING

Robbins & Myers crane drives are provided with both direct drive and fluid drive couplings. Your crane drive has been provided with:

With a direct drive coupling connecting the motor to the gearcase.

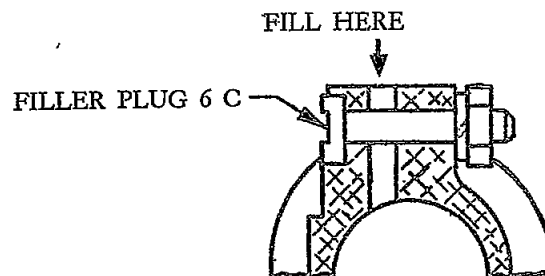
A dry fluid coupling. This coupling gives the crane and/or trolley a cushioned start to minimize swinging of the load. The cushioning affect of the coupling may be altered by increasing or decreasing the amount of the dry fluid in the coupling.

* The coupling was shipped from the factory filled with sufficient fluid for average conditions. A bottle with additional dry fluid was also shipped with the coupling so you may adjust the coupling to suit your particular application.

1. — *IF YOUR UNIT STARTS TOO FAST* — Remove some of the dry liquid for a smoother start. *DO NOT* remove so much fluid that the coupling slips more than 5 seconds during starting. Excessive slip would cause over heating and eventual damage to the coupling.

2. — *IF YOUR UNIT STARTS TOO SLOWLY* — Add dry fluid to the coupling so that it will come up to speed and stop slipping in less than 5 seconds.

To change the amount of shot in the 6 C coupling, loosen the nut then remove the filler plug. Be sure to replace the filler plug and tighten the nut before operating unit.



3. — *CHANGE FLUID ONCE A YEAR* — The dry fluid gradually loses its effectiveness after about a year of crane duty use. Prolonged use after it has broken down may result in damage to the coupling. We suggest that you replace the fluid in the coupling on a yearly basis. Dry fluid is available in convenient plastic vials at a nominal cost.

1 lb. 2 ounce bottle, dry fluid for 6 C coupling.

4. — *LUBRICATION* — The coupling is lubricated at the factory and requires no further lubrication. Never apply oil or grease to the flow charge.

* Center drive units not mounted on the Robbins and Myers cranes or hoists are shipped without fluid in the couplings. A full bottle of dry fluid is included with each coupling. Add fluid to the coupling in accordance with instructions 1 & 2 above.